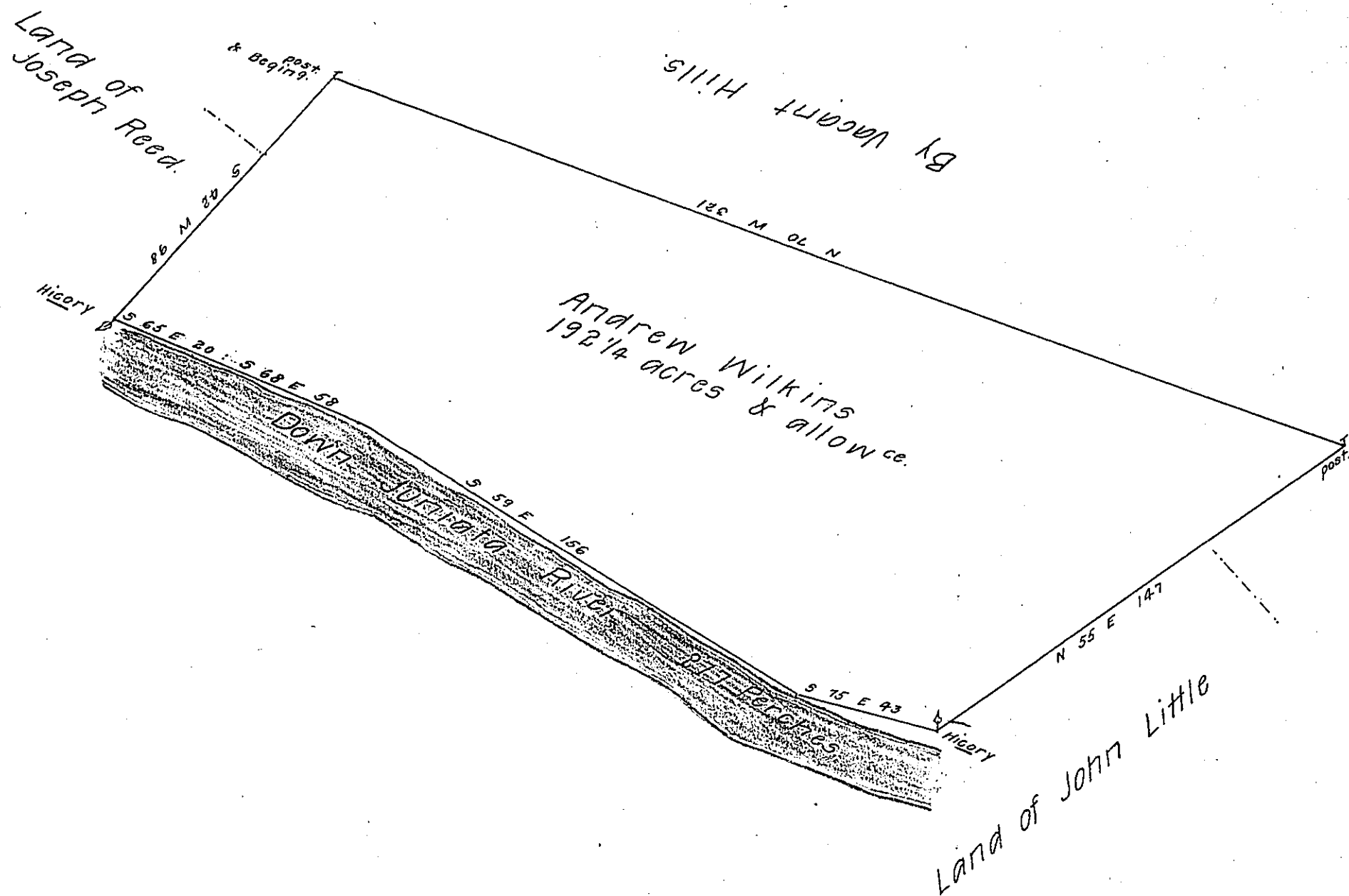


FORM No. 1.



The draught of a tract of land situate on the North side of Juniata river a Little Below the mouth of Rays-town Branch called Wilkins Sleeping Place in the County of Cumberland containing one Hundred Ninety two acres and Forty three perches with the usual allowance of six acres P Cent. for roads &c<sup>a</sup>. Survey'd the 9<sup>th</sup> day of July Anno Dom. 1766 In pursuance of a Warrant from the Hon<sup>ble</sup> the Proprietaries to Andrew Wilkins Bearing date at Philad<sup>a</sup> the Tenth day of August Anno Dom. 1765.

P - Wm. Maclay Dep<sup>ty</sup> Survr.

To John Lukens Esq<sup>r</sup> Survr Gen<sup>l</sup>  
of the Province of Pennsylvania.

IN TESTIMONY that the above is a copy of the original remaining on file in the Department of Internal Affairs of Pennsylvania, made conformably to an Act of Assembly approved the 16th day of February 1833, I have hereunto set my hand and caused the Seal of said Department to be affixed at Harrisburg, this third day of May 1907.

*Loach P. Brown*  
Secretary of Internal Affairs.